

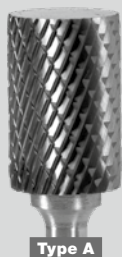
Rotary burrs

Tungsten Carbide

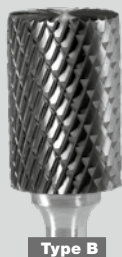
Euroboor heat treated durable Tungsten Carbide rotary burrs are engineered for rapid stock removal in harder materials. The coarse pitch of the teeth removes material effectively, while the deep secondary cuts

allow for smooth operation. It reduces the size of the chips and can be used at slower speeds than usual. The addition of the left hand flutes reduces the pulling action, allowing better operator control.

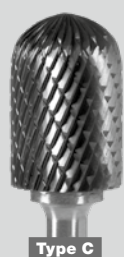




Type A



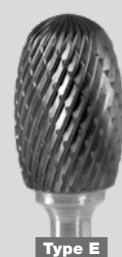
Type B



Type C



Type D



Type E



Type F

Type A cylinder - Ø and dimensions in mm
Without end cut



D1	D2	L1	L2	Teeth	Code
3	3	13	38.5	Double cut	RB.A0303
6	6	16	61	Double cut	RB.A0606
8	6	20	65	Double cut	RB.A0806
10	6	20	65	Double cut	RB.A1006
12	6	25	70	Double cut	RB.A1206
16	6	25	70	Double cut	RB.A1606
8	6	20	65	Diamond	RBD.A0806
10	6	20	65	Diamond	RBD.A1006
12	6	25	70	Diamond	RBD.A1206
16	6	25	70	Diamond	RBD.A1606

Type B cylinder - Ø and dimensions in mm
With end cut



D1	D2	L1	L2	Teeth	Code
3	3	13	38.5	Double cut	RB.B0303
6	6	16	61	Double cut	RB.B0606
8	6	20	65	Double cut	RB.B0806
10	6	20	65	Double cut	RB.B1006
12	6	25	70	Double cut	RB.B1206
16	6	25	70	Double cut	RB.B1606
8	6	20	65	Diamond	RBD.B0806
10	6	20	65	Diamond	RBD.B1006
12	6	25	70	Diamond	RBD.B1206
16	6	25	70	Diamond	RBD.B1606

Type C cylinder - Ø and dimensions in mm
Ball nose



D1	D2	L1	L2	Teeth	Code
3	3	13	38.5	Double cut	RB.C0303
6	6	16	61	Double cut	RB.C0606
8	6	20	65	Double cut	RB.C0806
10	6	20	65	Double cut	RB.C1006
12	6	25	70	Double cut	RB.C1206
16	6	25	70	Double cut	RB.C1606
8	6	20	65	Diamond	RBD.C0806
10	6	20	65	Diamond	RBD.C1006
12	6	25	70	Diamond	RBD.C1206
16	6	25	70	Diamond	RBD.C1606

Type D cylinder - Ø and dimensions in mm
Ball



D1	D2	L1	L2	Teeth	Code
3	3	2.7	38.5	Double cut	RB.D0303
6	6	5.4	61	Double cut	RB.D0606
8	6	7.2	65	Double cut	RB.D0806
10	6	9	65	Double cut	RB.D1006
12	6	10.8	70	Double cut	RB.D1206
16	6	14.4	70	Double cut	RB.D1606
8	6	7.2	65	Diamond	RBD.D0806
10	6	9	65	Diamond	RBD.D1006
12	6	10.8	70	Diamond	RBD.D1206
16	6	14.4	70	Diamond	RBD.D1606

Type E cylinder - Ø and dimensions in mm
Oval



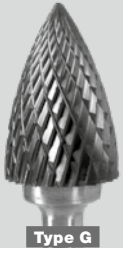
D1	D2	L1	L2	Teeth	Code
3	3	7	38.5	Double cut	RB.E0303
6	6	10	55	Double cut	RB.E0606
8	6	13	58	Double cut	RB.E0806
10	6	16	61	Double cut	RB.E1006
12	6	20	65	Double cut	RB.E1206
16	6	25	70	Double cut	RB.E1606
8	6	13	58	Diamond	RBD.E0806
10	6	16	61	Diamond	RBD.E1006
12	6	20	65	Diamond	RBD.E1206
16	6	25	70	Diamond	RBD.E1606

Type F cylinder - Ø and dimensions in mm
Ball nose tree

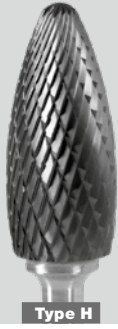


D1	D2	L1	L2	Teeth	Code
3	3	13	38.5	Double cut	RB.F0303
6	6	18	63	Double cut	RB.F0606
8	6	20	65	Double cut	RB.F0806
10	6	20	65	Double cut	RB.F1006
12	6	25	70	Double cut	RB.F1206
16	6	25	70	Double cut	RB.F1606
8	6	20	65	Diamond	RBD.F0806
10	6	20	65	Diamond	RBD.F1006
12	6	25	70	Diamond	RBD.F1206
16	6	25	70	Diamond	RBD.F1606

Rotary burrs



Type G



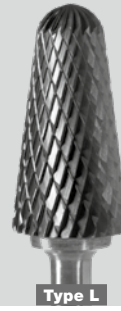
Type H



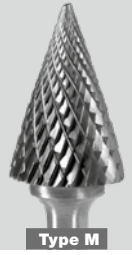
Type J



Type K



Type L



Type M

Type G cylinder - Ø and dimensions in mm
Arc pointed tree



D1	D2	L1	L2	Teeth	Code
3	3	13	38.5	Double cut	RB.G0303
6	6	18	63	Double cut	RB.G0606
8	6	20	65	Double cut	RB.G0806
10	6	20	65	Double cut	RB.G1006
12	6	25	70	Double cut	RB.G1206
16	6	25	70	Double cut	RB.G1606
8	6	20	65	Diamond	RBD.G0806
10	6	20	65	Diamond	RBD.G1006
12	6	25	70	Diamond	RBD.G1206
16	6	25	70	Diamond	RBD.G1606

Type H cylinder - Ø and dimensions in mm
Flame



D1	D2	L1	L2	Teeth	Code
3	3	13	38.5	Double cut	RB.H0303
6	6	18	63	Double cut	RB.H0606
8	6	20	65	Double cut	RB.H0806
10	6	20	70	Double cut	RB.H1006
12	6	25	77	Double cut	RB.H1206
16	6	25	81	Double cut	RB.H1606
8	6	20	65	Diamond	RBD.H0806
10	6	20	70	Diamond	RBD.H1006
12	6	25	77	Diamond	RBD.H1206
16	6	25	81	Diamond	RBD.H1606

Type J cylinder - Ø and dimensions in mm
60 degree cone



D1	D2	L1	L2	Teeth	Code
6	6	5.2	50	Double cut	RB.J0606
10	6	8.7	53	Double cut	RB.J1006
12	6	10.4	55	Double cut	RB.J1206
16	6	13.8	58	Double cut	RB.J1606
10	6	8.7	53	Diamond	RBD.J1006
12	6	10.4	55	Diamond	RBD.J1206
16	6	13.8	58	Diamond	RBD.J1606

Type K cylinder - Ø and dimensions in mm
90 degree cone



D1	D2	L1	L2	Teeth	Code
6	6	16	61	Double cut	RB.K0606
10	6	25	70	Double cut	RB.K1006
12	6	28	73	Double cut	RB.K1206
16	6	33	78	Double cut	RB.K1606
12	6	28	73	Diamond	RBD.K1206
16	6	33	78	Diamond	RBD.K1606

Type L cylinder - Ø and dimensions in mm
Ball nose cone



D1	D2	L1	L2	Teeth	Code
3	3	13	38.5	Double cut	RB.L0303
6	6	18	61	Double cut	RB.L0606
8	6	22	65	Double cut	RB.L0806
10	6	25	70	Double cut	RB.L1006
12	6	28	73	Double cut	RB.L1206
16	6	33	78	Double cut	RB.L1606
8	6	22	65	Diamond	RBD.L0806
10	6	25	70	Diamond	RBD.L1006
12	6	28	73	Diamond	RBD.L1206
16	6	33	78	Diamond	RBD.L1606

Type M cylinder - Ø and dimensions in mm
Cone



D1	D2	L1	L2	Teeth	Code
3	3	13	38.5	Double cut	RB.M0303
6	6	18	63	Double cut	RB.M0606
8	6	20	65	Double cut	RB.M0806
10	6	20	65	Double cut	RB.M1006
12	6	25	70	Double cut	RB.M1206
16	6	25	70	Double cut	RB.M1606
8	6	20	65	Diamond	RBD.M0806
10	6	20	65	Diamond	RBD.M1006
12	6	25	70	Diamond	RBD.M1206
16	6	25	70	Diamond	RBD.M1606

Rotary burrs sets



Type N



Type N cylinder - Ø and dimensions in mm
Inverted cone

D1	D2	L1	L2	Teeth	Code
3	3	13	38.5	Double cut	RB.N0303
6	6	17	52	Double cut	RB.N0606
10	6	10	55	Double cut	RB.N1006
12	6	13	58	Double cut	RB.N1206
16	6	16	61	Double cut	RB.N1606
10	6	10	55	Diamond	RBD.N1006
12	6	13	58	Diamond	RBD.N1206



5 piece rotary burrs set shaft Ø 6 mm

- High-quality Tungsten Carbide (K30).
- Double cut - designed for rapid stock removal.
- Delivered with:
 - RB.A1006 - Cylinder without end cut
 - RB.B1006 - Cylinder with end cut
 - RB.C1206 - Cylinder ball nose
 - RB.F1006 - Cylinder ball nose tree
 - RB.L1206 - Cylinder ball nose cone

RBS.105



10 piece rotary burrs set shaft Ø 6 mm

- High-quality Tungsten Carbide (K30).
- Double cut - designed for rapid stock removal.
- Delivered with:
 - RB.A1006 - Cylinder without end cut
 - RB.C1006 - Cylinder ball nose
 - RB.D1006 - Cylinder ball
 - RB.E1206 - Cylinder oval
 - RB.F1206 - Cylinder ball nose tree
 - RB.G1206 - Cylinder arc pointed tree
 - RB.J1006 - Cylinder 60 degree cone
 - RB.L1206 - Cylinder ball nose cone
 - RB.M1206 - Cylinder cone
 - RB.N1006 - Cylinder inverted cone

RBS.110