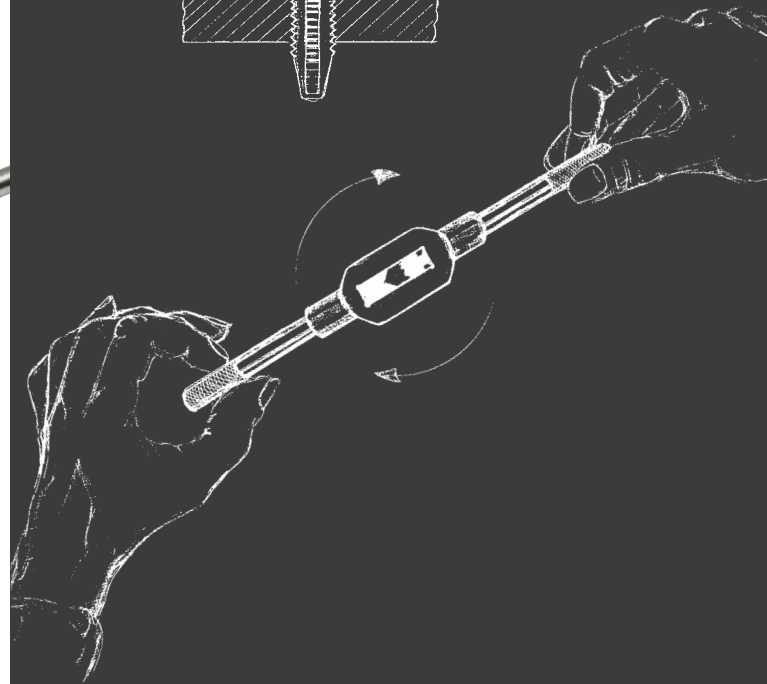
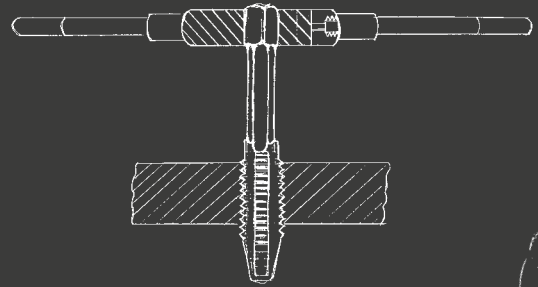
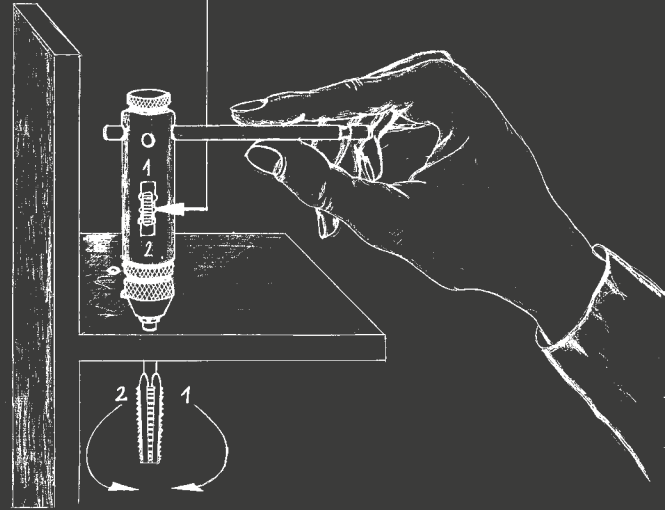
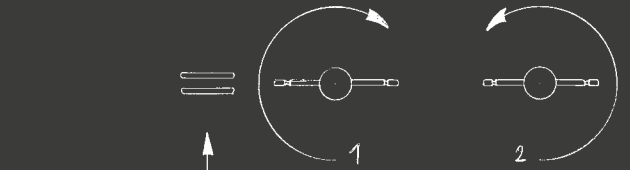




DIE STOCKS - TAP WRENCHES
PORTA-UTENSILI





DIE STOCKS - TAP WRENCHES PORTA-UTENSILI

		Zinc die cast pressogetto di zinco	Steel esecuzione acciaio	Inch misura pollice
Tap Holder with Ratchet Giramaschi con mandrino			10	
Adjustable Tap Wrenches Giramaschi regolabili		12	12	
Die Stocks Portafiliera		11	11	10
Tap Extensions Prolunghe per maschi	13			

because available ■ because reliable ■ because you ■



Tap Holder with Ratchet

for right- and left-hand-turn

all steel quality

Giramaschi con mandrino

per uso fisso, destro e sinistro

esecuzione acciaio



No.	for Taps	Square mm	Length mm	Weight kg		Art.-No.	€/Piece
1	M 3-10 1/8-3/8	2.4-5.5	85	0,165	10	10001	8,50
2	M 5-12 7/32-1/2	4.5-8.0	100	0,310	10	10002	10,50
10	M 3-10 1/8-3/8	2.4-5.5	250	0,250	10	10010	14,00
20	M 5-12 7/32-1/2	4.5-8.0	300	0,440	10	10020	17,00

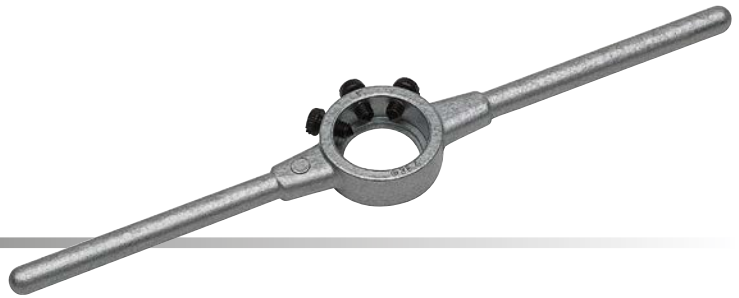
Jaws and Spring for No. 1 und 10	10	10091	1,50
Jaws and Spring for No. 2 und 20	10	10092	2,50

Die Stocks

Inch - with 3 screws

Portafiliera misura

pollice con 3 vite



Ø	mm	inch/pollice	Length mm	Weight kg		Art.-No.	€/Piece
13/16"	20.6 x 6.35	13/16 x 1/4	200	0,060	5	15520	3,00
1"	25.4 x 9.5	1" x 3/8	224	0,100	5	15525	3,70
1.5/16"	33.4 x 11.1	1.5/16 x 7/16	270	0,180	5	15533	6,30
1.1/2"	38.1 x 12.7	1.1/2 x 1/2	315	0,320	5	15538	9,50
2"	50.8 x 15.9	2" x 5/8	560	0,900	1	15550	15,50
2.1/4"	57.1 x 17.5	2.1/4 x 11/16	560	0,900	1	15557	15,70
2.1/2"	63.5 x 19.0	2.1/2 x 3/4	630	1,400	1	15563	22,00
3"	76.2 x 22.2	3" x 7/8	900	2,200	1	15576	61,00
3.1/2"	88.9 x 25.4	3.1/2" x 1"	900	3,300	1	15588	63,00
4"	101.6 x 25.4	4" x 1"	1000	3,600	1	15599	191,00




Die Stocks

DIN 225 (DIN EN 22568), Zinc die cast

Portafiliera

DIN 225 (DIN EN 22568), pressogetto di zinco



Ø x mm	for round Dies DIN 223 (DIN EN 22568)		Length mm	Weight kg		Art.-No.	€/Piece	
16 x 5	M	1-2.6	BSW 1/16-3/32	160	0,050	5	15001	3,00
20 x 5	M	3-4	BSW 1/8-5/32	200	0,065	5	15002	3,00
20 x 7	M	4.5-6	BSW 3/16-1/4	200	0,065	5	15003	3,00
25 x 9	M	7-9	BSW 5/16	224	0,105	5	15004	3,70
30 x 11	M	10-11	BSW 3/8-7/16	280	0,190	5	15005	5,90
38 x 10	Mf	12-15	G 1/4	315	0,340	5	15006	9,70
38 x 14	M	12-14	BSW 1/2-9/16	315	0,340	5	15007	9,70
45 x 14	Mf	16-20	G 3/8-1/2	450	0,650	1	15008	11,90
45 x 18	M	16-20	BSW 5/8-13/16	450	0,650	1	15009	11,90
55 x 16	Mf	22-26	G 5/8-3/4	560	0,900	1	15010	15,70
55 x 22	M	22-24	BSW 7/8-1"	560	0,900	1	15011	15,70
65 x 18	Mf	27-36	G 7/8-1"	630	1,400	1	15012	22,00
65 x 25	M	27-36	BSW 1.1/8-1.3/8	630	1,400	1	15013	22,00

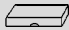
Die Stocks

DIN 225 (DIN EN 22568), **STEEL**

Portafiliera

DIN 225 (DIN EN 22568), **esecuzione acciaio**



Ø x mm	for round Dies DIN 223 (DIN EN 22568)		Length mm	Weight kg		Art.-No.	€/Piece	
45 x 18	M	16-20	BSW 5/8-13/16	450	0,650	1	15209	22,00
55 x 22	M	22-24	BSW 7/8-1"	560	0,900	1	15211	31,00
65 x 25	M	27-36	BSW 1.1/8-1.3/8	630	1,400	1	15213	39,00
75 x 20	Mf	38-42	G 1.1/8-1.1/4	800	2,250	1	15214	64,00
75 x 30	M	38-42	BSW 1.1/2-1.5/8	800	2,100	1	15215	64,00
90 x 22	Mf	45-52	G 1.3/8-1.5/8	900	3,200	1	15216	82,00
90 x 36	M	45-52	BSW 1.3/4-2"	900	3,000	1	15217	82,00
105 x 22	Mf	54-63	G 1.3/4-2"	975	3,500	1	15218	98,00
105 x 36	M	54-63	BSW 2.1/4"-2.1/2"	975	3,500	1	15219	98,00
120 x 22	Mf	64-71	G 2.1/4-2.3/4	956	3,170	1	15220	280,00
120 x 36	M	64-71	BSW 2.3/4"	956	3,910	1	15221	280,00
130 x 25			G 3"	966	3,505	1	15222	350,00
130 x 36				966	4,025	1	15223	350,00
140 x 22				976	3,620	1	15224	450,00
150 x 25			G 3.1/2"	986	3,950	1	15226	495,00
160 x 25			G 4"	996	4,115	1	15228	680,00

Adjustable Tap Wrenches

DIN 1814 Zinc die cast

Giramaschi regolabili

DIN 1814, lega leggera



No.	for Taps	Square mm	Length mm	Weight kg		Art.-No.	€/Piece
0	M 1-8 1/16-1/4	2.0-5.0	130	0,050	5	13000	3,80
1	M 1-10 1/16-3/8 G 1/8	2.0-6.3	176	0,095	5	13010	4,00
1.1/2	M 1-12 1/16-1/2 G 1/8	2.1-8.0	176	0,120	5	13015	4,00
2	M 4-12 5/32-1/2 G 1/8	3.0-9.0	280	0,285	5	13020	6,60
3	M 5-20 7/32-3/4 G 1/8-1/2	4.9-12	380	0,660	1	13030	13,00
4	M 11-27 7/16-1" G 1/4-3/4	5.5-16	505	1,500	1	13040	24,50
5 L	M 13-32 1/2 -1.1/4 G 1/4-1"	7-20	700	1,800	1	13050	34,00

Adjustable Tap Wrenches

DIN 1814, **STEEL**

Giramaschi regolabili

DIN 1814, **esecuzione acciaio**



No.	for Taps	Square mm	Length mm	Weight kg		Art.-No.	€/Piece
0	M 1-8 1/16-1/4	2.0-5.0	130	0,050	5	14000	6,20
1	M 1-10 1/16-3/8	2.0-6.3	176	0,106	5	14010	6,60
1.1/2	M 1-12 1/16-1/2 G 1/8	2.1-8.0	176	0,104	5	14015	6,60
2	M 4-12 5/32-1/2 G 1/8	3.0-9.0	280	0,300	5	14020	12,80
3	M 5-20 7/32-3/4 G 1/8-1/2	4.9-12	380	0,700	1	14030	23,10
4	M 11-27 7/16-1" G 1/4-3/4	5.5-16	500	1,410	1	14040	40,00
5	M 13-32 1/2-1.1/4 G 1/4-1"	7-20	700	1,650	1	14050	50,00
6	M 18-42 3/4-1.1/2 G 1/2-1.1/4	11-24	1000	3,250	1	14060	85,00
7	M 27-52 1.1/8-2" G 3/4-1.3/4	16-32	1250	3,700	1	14070	95,00
8	M 27-64 1.1/8"-3" G 3/4-3"	16-40	1250	9,100	1	14080	230,00
9	M 39-110 G 1 1/4-4"	22-50	1300	10,260	1	14090	295,00



Tap Extensions

DIN 377, Squares according to DIN 10

Prolunghe per maschi

DIN 377, Quadro in base a DIN 10



Square mm	L1	for DIN 352	Art.-No.	€/Piece
2.1	60	M 1-2.6	14521	3,00
2.4	70		14524	3,00
2.7	80	M 3	14527	3,00
3.0	90	M 3.5	14530	3,00
3.4	95	M 4	14534	3,00
3.8	100		14538	3,60
4.3	105		14543	4,20
4.9	110	M 4.5-8	14549	3,40
5.5	115	M 9-10	14555	3,80
6.2	120	M 11	14562	4,10
7.0	125	M 12	14570	5,10
8.0	125		14580	6,30
9.0	130	M 14-16	14590	7,00
10.0	140		14610	9,20
11.0	150	M 18	14611	11,00
12.0	155	M 20	14612	14,40
13.0	165		14613	16,30
14.5	175	M 22-24	14614	20,00
16.0	180	M 27	14616	21,00
18.0	200	M 30	14618	24,70
20.0	220	M 33	14620	32,00
22.0	220	M 36	14622	44,10
24.0	235	M 39-42	14624	58,00
26.0	250		14626	75,00
29.0	265	M 45-48	14629	88,00
32.0	285	M 52	14632	125,00