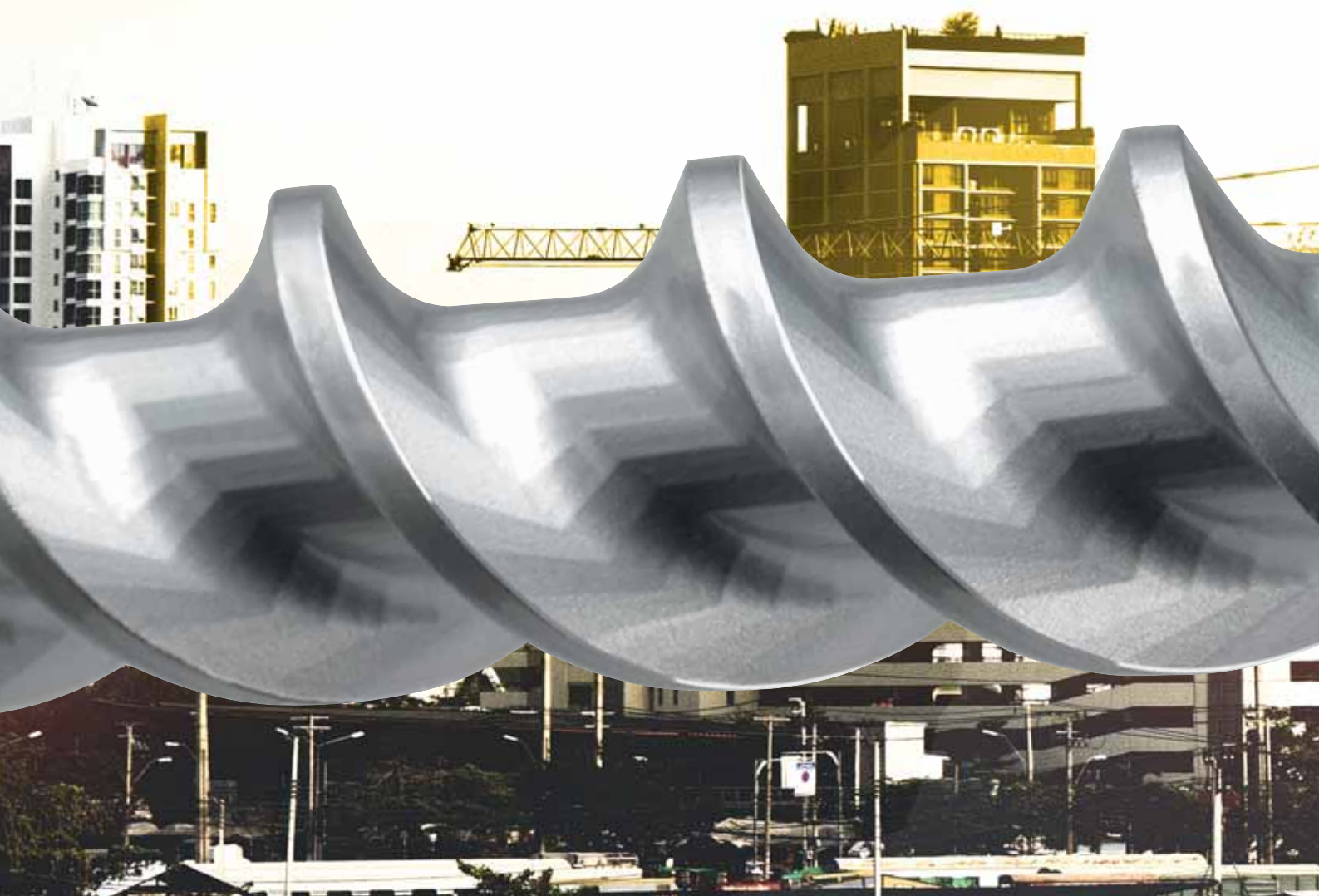


NEW SDS-MAX DRILL BIT

# **ULTIMAX 646**

**100% CARBIDE HEAD - 10 CUTTERS**



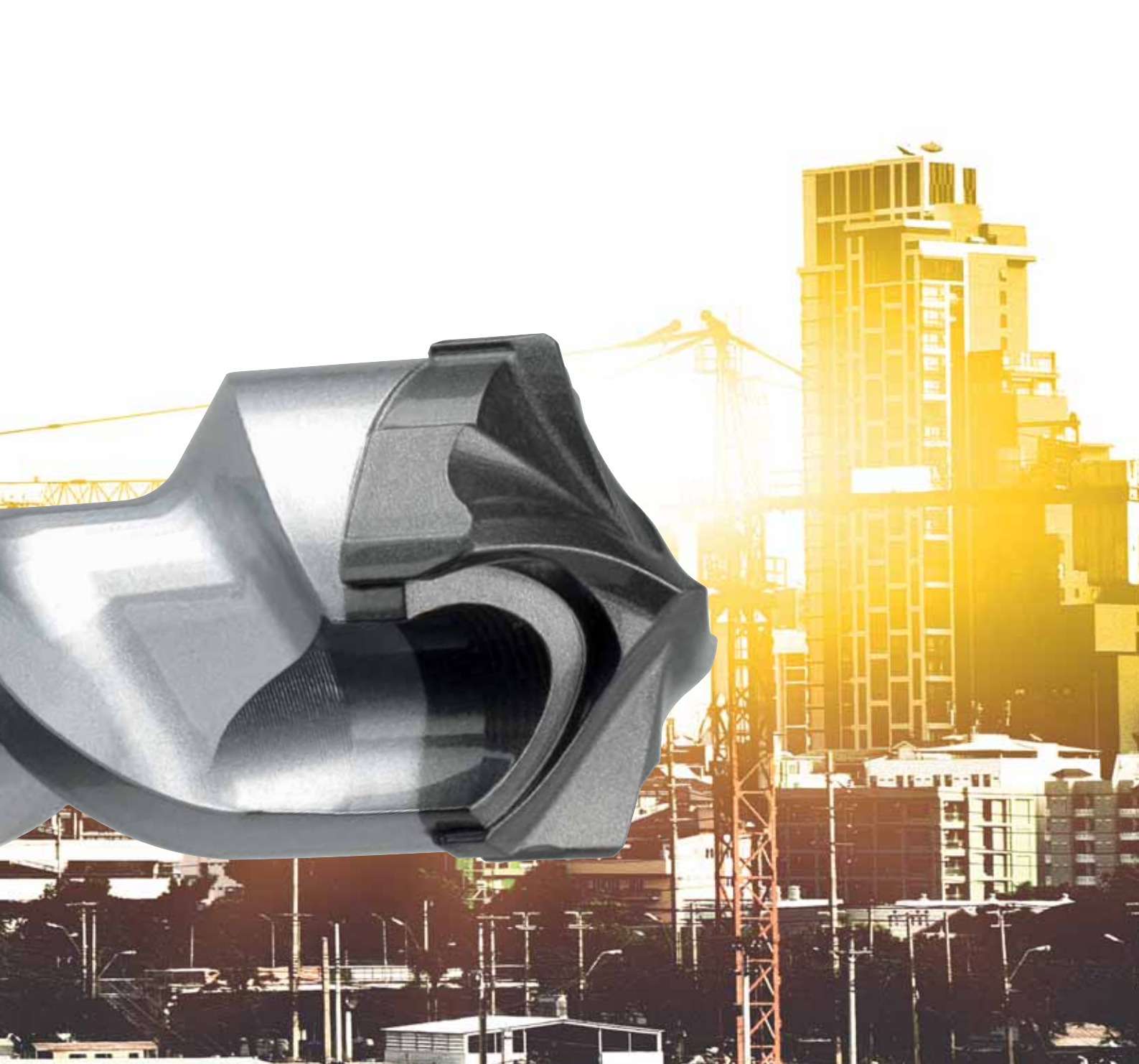
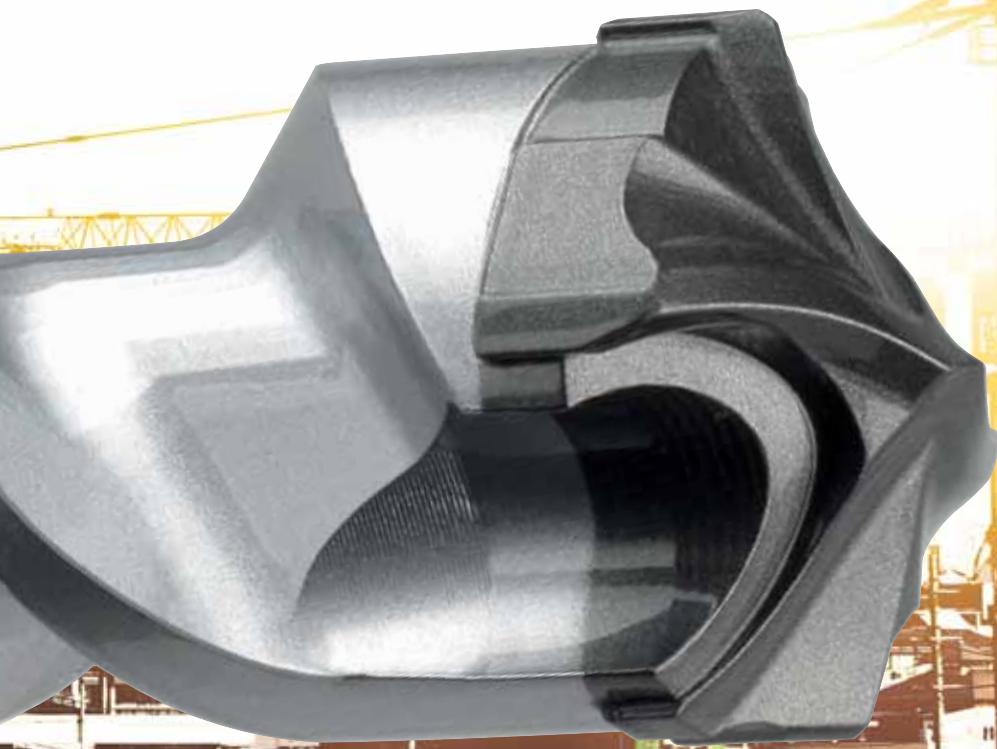
**DRILLS THROUGH  
OVERSIZED REBAR\***

**+ 1000 HOLES**



\* Hand tests with 20 joules hammer drill

\* Tests on an automatic bench, 8,8 joules hammer drill, C50/60 concrete, 150 mm hole depth, 24 mm hole diameter



**HIGH SPEED DRILLING\***

**IDEAL FOR POWERFUL  
HAMMER DRILL**

**30 CM  
PER MINUTE**



**20  
JOULES  
>12 KG**

\* Tests on an automatic bench, C50/60 concrete

Ref.  
166

# Ultimax 646 **ULTIMAX 646**

Hammer drill bit 10 cutters compatible  
SDS-max

SDS-max drill bit with massive carbide head technology. High performance for drilling hard concrete and reinforced concrete.



Reinforced concrete, Concrete

**+**

## • 10 CUTTING EDGES TECHNOLOGY

### Features

- Massive carbide head.
- 10 cutters geometry.
- 6 lateral stabiliser.
- Elliptical 130° angle tip.
- Centering point.

### Benefits

- Fast drilling speed.
- High destruction power.
- Heat resistance.
- Low vibration.
- Longer lifespan.

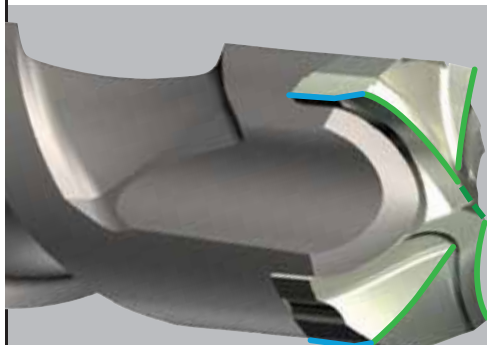
### Applications

- Fixing steel rebar.
- Passage of pipes or electrical cable.

Shank Hammer drill



Compatible  
SDS-max



**6** FRONT CUTTERS 2 main ones  
2 secondary ones  
2 central ones

*Heavy rebar cutting power and stronger chiseling effect thanks to optimal combination of concave and convex cutters. Elliptic 130° angle for better penetration. Aggressive center point.*



**4** SIDE CUTTERS

*Wear mark  
Guarantees concentricity and accurate dimensions.*

**6** SIDE STABILISERS

*Hammering efforts focus on the drilling axis. Optimum performance even with most powerful hammerdrills. Vibration control.*

VIDEO DEMO



Ø	WL	TL	Ref.	Gencod	Qty	Ø	WL	TL	Ref.	Gencod	Qty
<b>L 200 x 340</b>						<b>L 550 x 690</b>					
12*	200	340	166D12L0340	3336600004818	1	16	550	690	166D16L0690	3336600005327	1
14	200	340	166D14L0340	3336600004825	1	18	550	690	166D18L0690	3336600005334	1
15*	200	340	166D15L0340	3336600004832	1	20	550	690	166D20L0690	3336600005358	1
16	200	340	166D16L0340	3336600004849	1	22	550	690	166D22L0690	3336600005365	1
18	200	340	166D18L0340	3336600004856	1	24	550	690	166D24L0690	3336600005372	1
20	200	340	166D20L0340	3336600004870	1	25	550	690	166D25L0690	3336600005389	1
22	200	340	166D22L0340	3336600004887	1	26	550	690	166D26L0690	3336600005396	1
24	200	340	166D24L0340	3336600004894	1	28	550	690	166D28L0690	3336600005402	1
25	200	340	166D25L0340	3336600004900	1	30	550	690	166D30L0690	3336600005426	1
26	200	340	166D26L0340	3336600004917	1	32	550	690	166D32L0690	3336600005433	1
28	200	340	166D28L0340	33366000068261	1	35	550	690	166D35L0690	3336600005440	1
30	200	340	166D30L0340	33366000028760	1	36	550	690	166D36L0690	3336600005457	1
32	200	340	166D32L0340	33366000068278	1	38	550	690	166D38L0690	33366000028685	1
35	200	340	166D35L0340	33366000054707	1	40**	550	690	166D40L0690	33366000028692	1
36	200	340	166D36L0340	33366000063440	1	42**	550	690	166D42L0690	33366000063389	1
38	200	340	166D38L0340	33366000063457	1	45**	550	690	166D45L0690	33366000063396	1
40**	200	340	166D40L0340	33366000063464	1	52**	550	690	166D52L0690	3336600201330	1
42**	200	340	166D42L0340	33366000063402	1	<b>L 780 x 920</b>					
45**	200	340	166D45L0340	33366000063471	1	16	780	920	166D16L0920	3336600005464	1
<b>L 400 x 540</b>						18	780	920	166D18L0920	3336600005471	1
12*	400	540	166D12L0540	3336600004924	1	20	780	920	166D20L0920	3336600005495	1
14	400	540	166D14L0540	3336600004931	1	22	780	920	166D22L0920	3336600005501	1
15*	400	540	166D15L0540	3336600004948	1	24	780	920	166D24L0920	3336600005518	1
16	400	540	166D16L0540	3336600004955	1	25	780	920	166D25L0920	3336600005525	1
18	400	540	166D18L0540	3336600005136	1	26	780	920	166D26L0920	3336600005532	1
20	400	540	166D20L0540	3336600005150	1	28	780	920	166D28L0920	3336600005549	1
22	400	540	166D22L0540	3336600005167	1	30	780	920	166D30L0920	3336600005563	1
24	400	540	166D24L0540	3336600005174	1	32	780	920	166D32L0920	3336600005570	1
25	400	540	166D25L0540	3336600005181	1	35	780	920	166D35L0920	3336600005587	1
26	400	540	166D26L0540	3336600005198	1	36	780	920	166D36L0920	3336600005594	1
28	400	540	166D28L0540	3336600005204	1	40**	780	920	166D40L0920	3336600005600	1
30	400	540	166D30L0540	3336600005228	1	42**	780	920	166D42L0920	33366000021464	1
32	400	540	166D32L0540	3336600005235	1	45**	780	920	166D45L0920	33366000024113	1
35	400	540	166D35L0540	3336600005242	1	<b>L 1160 x 1300</b>					
36	400	540	166D36L0540	3336600005259	1	20	1160	1300	166D20L1300	33366000063297	1
38	400	540	166D38L0540	33366000023093	1	22	1160	1300	166D22L1300	33366000063303	1
40**	400	540	166D40L0540	33366000023109	1	25	1160	1300	166D25L1300	33366000068193	1
42**	400	540	166D42L0540	33366000023116	1	28	1160	1300	166D28L1300	33366000063310	1
45**	400	540	166D45L0540	33366000063419	1	32	1160	1300	166D32L1300	33366000028746	1
52**	400	540	166D52L0540	3336600201323	1	35	1160	1300	166D35L1300	33366000063327	1
						36	1160	1300	166D36L1300	33366000063334	1
						42**	1160	1300	166D42L1300	33366000063341	1
						45**	1160	1300	166D45L1300	33366000063358	1
						<b>L 1360 x 1500</b>					
						20	1360	1500	166D20L1500	33366000024120	1
						24	1360	1500	166D24L1500	33366000024137	1
						25	1360	1500	166D25L1500	33366000037625	1
						28	1360	1500	166D28L1500	33366000024144	1
						32	1360	1500	166D32L1500	33366000024151	1
						36	1360	1500	166D36L1500	33366000024168	1
						40**	1360	1500	166D40L1500	33366000063365	1
						42**	1360	1500	166D42L1500	33366000063372	1
						45**	1360	1500	166D45L1500	33366000027091	1

\* 3 cutting edges  
\*\* 6 cutting edges



Floor display  
Ultimax/Chisels

Ref.	Gencod
M00208	3336609010964



Black plastic clip

Power recommendation machine / drill diameter.  
Using a machine not adapted to the diameter can break the drill bit.

MACHINE Attachment	Joule strike force	Weight in kg	DIAMETER																			
			12	14	16	18	20	22	24	26	28	30	32	34	36	38	40	42	44	46	48	50
SDS-max wired perforator	8-9	6-7																				
	12-13	8-9																				
	19-20	11-12																				

Optimal use     Occasional use     Not compatible

